

Town of Appleton Water Resources



LEGEND

- State roads
- Town roads
- - - Private roads
- ▭ Watershed Boundaries

SIGNIFICANT AQUIFERS

- ▨ 10 - 50 gpm

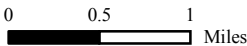
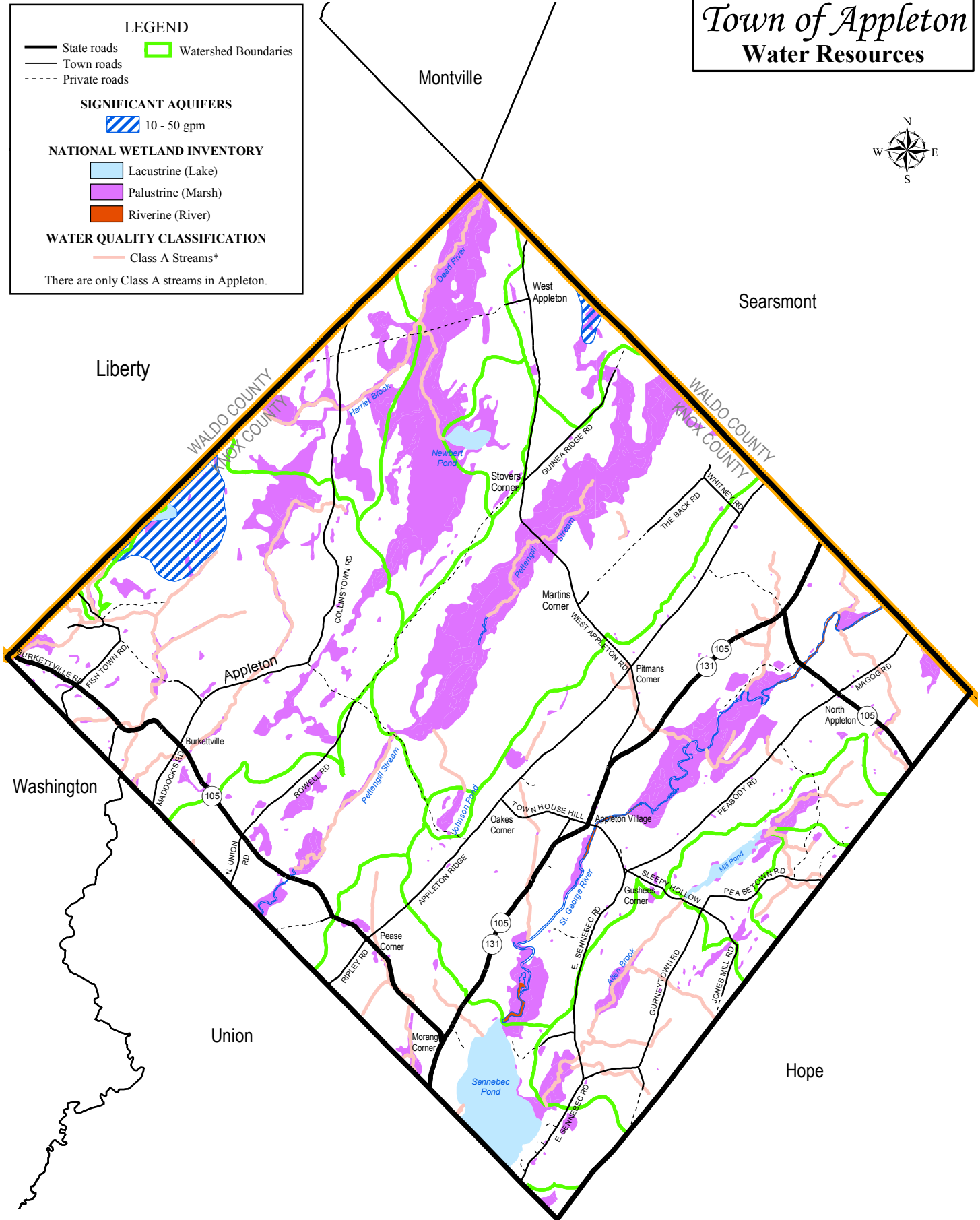
NATIONAL WETLAND INVENTORY

- ▭ Lacustrine (Lake)
- ▭ Palustrine (Marsh)
- ▭ Riverine (River)

WATER QUALITY CLASSIFICATION

- Class A Streams*

There are only Class A streams in Appleton.



Sources: MGS, USFWS, MEDOT and MEGIS
Map revised: July, 2004



Mid-Coast Regional Planning Commission (MCRPC)
Eastern Maine Development Corporation (EMDC)

www.midcoastplanning.org - www.emdc.org
(207) 594-2299 - (207) 942-6389



See map disclaimer at end of the Executive Summary.