

Town of Appleton Public Facilities



LEGEND

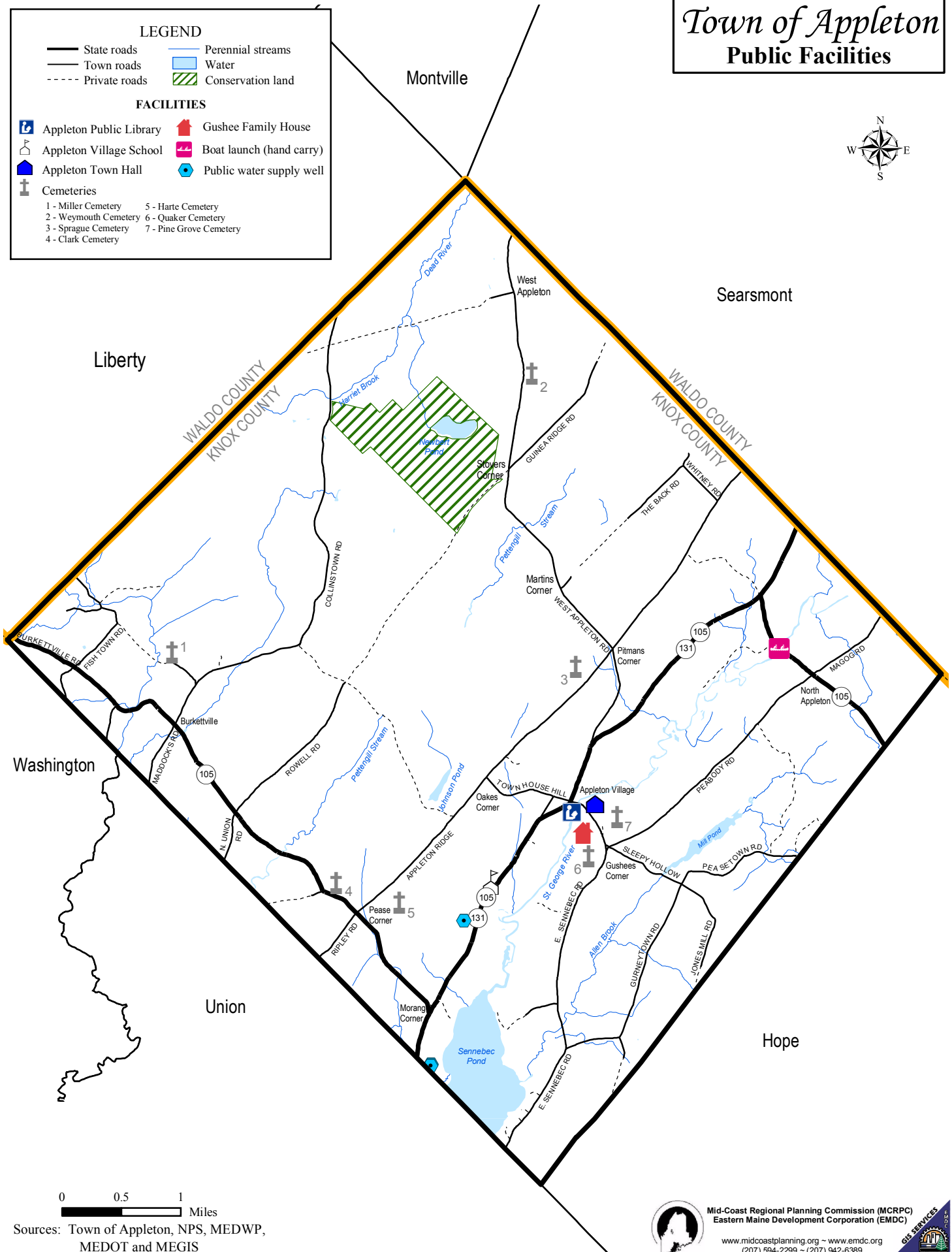
- State roads
- Town roads
- - - Private roads
- Perennial streams
- Water
- ▨ Conservation land

FACILITIES

- Appleton Public Library
- Appleton Village School
- Appleton Town Hall
- Cemeteries
- Gushee Family House
- Boat launch (hand carry)
- Public water supply well

Cemeteries

- 1 - Miller Cemetery
- 2 - Weymouth Cemetery
- 3 - Sprague Cemetery
- 4 - Clark Cemetery
- 5 - Harte Cemetery
- 6 - Quaker Cemetery
- 7 - Pine Grove Cemetery



0 0.5 1
Miles

Sources: Town of Appleton, NPS, MEDWP,
MEDOT and MEGIS
Map revised: July, 2004



Mid-Coast Regional Planning Commission (MCRPC)
Eastern Maine Development Corporation (EMDC)

www.midcoastplanning.org ~ www.emdc.org
(207) 594-2299 ~ (207) 942-6389



See map disclaimer at end of the Executive Summary.